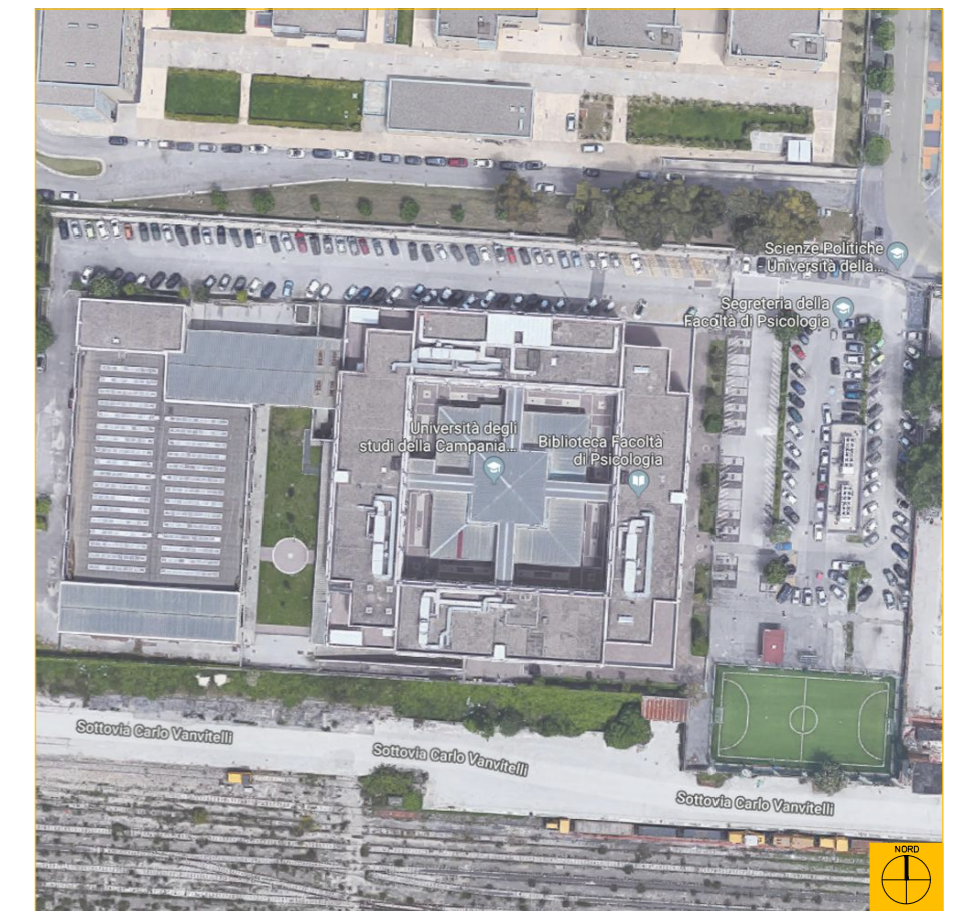


Mappatura dei percorsi di accessibilità







COMPLESSO VIALE ELLITTICO CASERTA



Oggetto:
Stato attuale, piano terra.
Analisi dei percorsi accessibili ed individuazione delle barriere architettoniche

Aggiornamento:
maggio 2019

Legenda

-  Ingresso
-  Percorso accessibile
-  Percorso inaccessibile
-  Impianto di risalita accessibile
-  Bagno accessibile
-  Parcheggio

